

**beyerdynamic**

# **AMIRON 300**

TRUE WIRELESS EARPHONES

DISASSEMBLY INSTRUCTIONS TO REMOVE THE BATTERY

— **PROFESSIONAL STAFF ONLY** —

---

1. Introduction.....	3
2. Information for Germany on disposal in accordance with the Electrical and Electronic Equipment Act (ElektroG) and the WEEE Directive 2012/19/EU .....	3
3. Disposal of batteries .....	3
4. Removing the battery .....	3


## 1. Introduction

In accordance with the Electrical and Electronic Equipment Act (ElektroG) and the European WEEE Directive 2012/19/EU, electrical and electronic equipment must be disposed of separately from household waste at the end of their life.


If the device is operated with batteries, these must be removed before disposal. If batteries are permanently installed in the device, they must be removed by professional staff for safety reasons.

These disassembly instructions show how to proceed.

## 2. Information for Germany on disposal in accordance with the Electrical and Electronic Equipment Act (ElektroG) and the WEEE Directive 2012/19/EU

- ▶ The symbol of the crossed-out dustbin on the product, in the operating instructions or on the packaging means that electrical and electronic devices must be disposed of separately from household waste at the end of their life cycle. 
- ▶ Always dispose of used equipment in accordance with applicable regulations.
- ▶ For the return of old equipment, batteries and rechargeable batteries, there are free collection points or a free return to beyerdynamic, as well as other acceptance points for reuse. The addresses are available at the local city or municipal administration.
- ▶ Dealers for electronic equipment are generally obliged to take back waste electrical/electronic equipment free of charge. This obligation also applies to sales via remote communication.
- ▶ For further information, please contact the local authorities or the dealer from whom the product was purchased.
- ▶ The consumer/end-user is responsible for the deletion of personal data on the waste electrical/electronic equipment.

## 3. Disposal of batteries

- ▶ Dispose of batteries separately after use from the product in accordance with applicable regulations. They must not be disposed of in household waste. The return is free of charge for consumers/end users. 
- ▶ Before disposal, discharge and remove the batteries.

## 4. Removing the battery

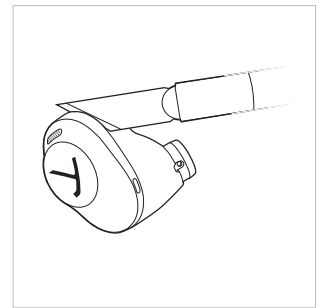


- ▶ **Caution:**  
**Before removal discharge the battery.**  
**For this product a non-destructive removal of the battery by the end user is not possible.**  
**Due to the safety risk, this activity may only be carried out by professional staff.**  
**Please contact beyerdynamic or consult independent professional staff.**

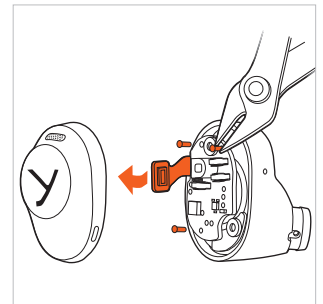
### Earphones

- ▶ Discharge the batteries before disposing of them.
- ▶ To do this, remove the earphones from the charging case.
- ▶ Remove the eartips from the earphones.

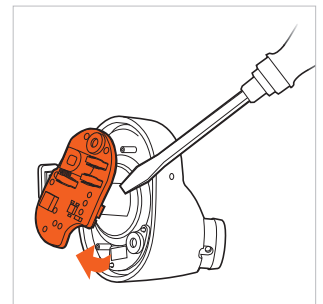
- ▶ Use a knife (cutter) to cut around the gap in the earphone a few times until the glue has loosened enough to allow you to lever open the housing.



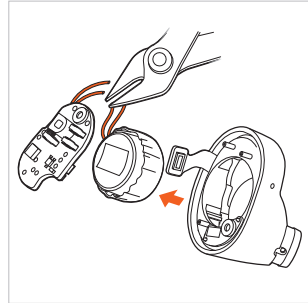
- ▶ Loosen the plug connection on the side. Pinch off the heads of the three plastic pins.



- ▶ Lever off the circuit board.

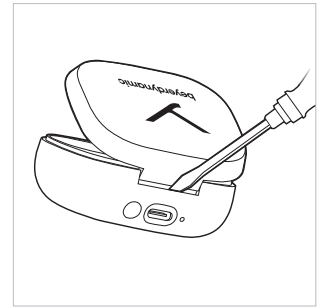


- ▶ Remove the battery.
  - ▶ Cut the battery connections **one after the other** using pliers/scissors.
- As soon as you have cut the first cable, insulate the end with adhesive tape. Proceed in the same way with the second cable.
- Caution:** The cut ends without adhesive tape must not touch each other. There is a risk of a short circuit!

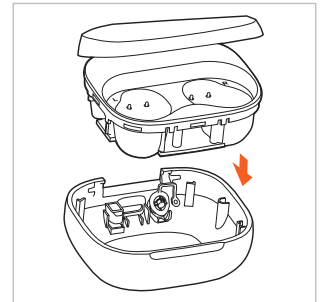


#### Charging case

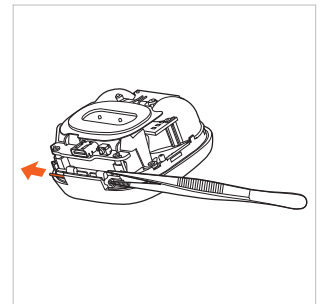
- ▶ Discharge the battery before disposing of it.
- ▶ Lift the cover of the charging case slightly. Insert a flat screwdriver between the metal joint and the lower part of the housing and lever up the insert.



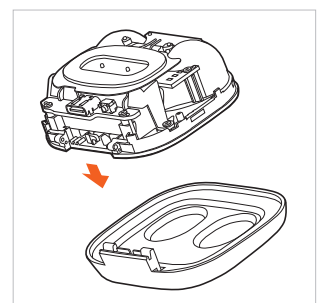
- ▶ Loosen the insert and remove the lower part of the housing.



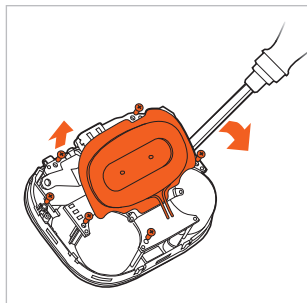
- ▶ Pull out the pin of the metal joint.



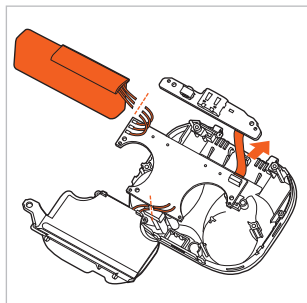
- ▶ Remove the cover of the charging case.



- ▶ Loosen the six screws on the circuit board with a PH00 screwdriver and lever off the cover of the circuit board.



- ▶ Remove the lower part of the circuit board.
- ▶ Remove the battery.
- ▶ Cut the battery connection **one after the other** using pliers/scissors. As soon as you have cut the first cable, insulate the end with adhesive tape. Proceed with the other cables in the same way.



**Caution:** The cut ends without adhesive tape must not touch each other. There is a risk of a short circuit!

**beyerdynamic GmbH & Co. KG**  
Theresienstraße 8 · 74072 Heilbronn / Germany  
Phone +49 7131 617-300 · E-Mail [info@beyerdynamic.com](mailto:info@beyerdynamic.com)  
[www.beyerdynamic.com](http://www.beyerdynamic.com)

For further distributors worldwide, please go to [www.beyerdynamic.com](http://www.beyerdynamic.com)  
Non-contractual illustrations. Subject to change without notice.